



Rotterdam WeatherWise: The “Tile taxi” service in a climate proof city

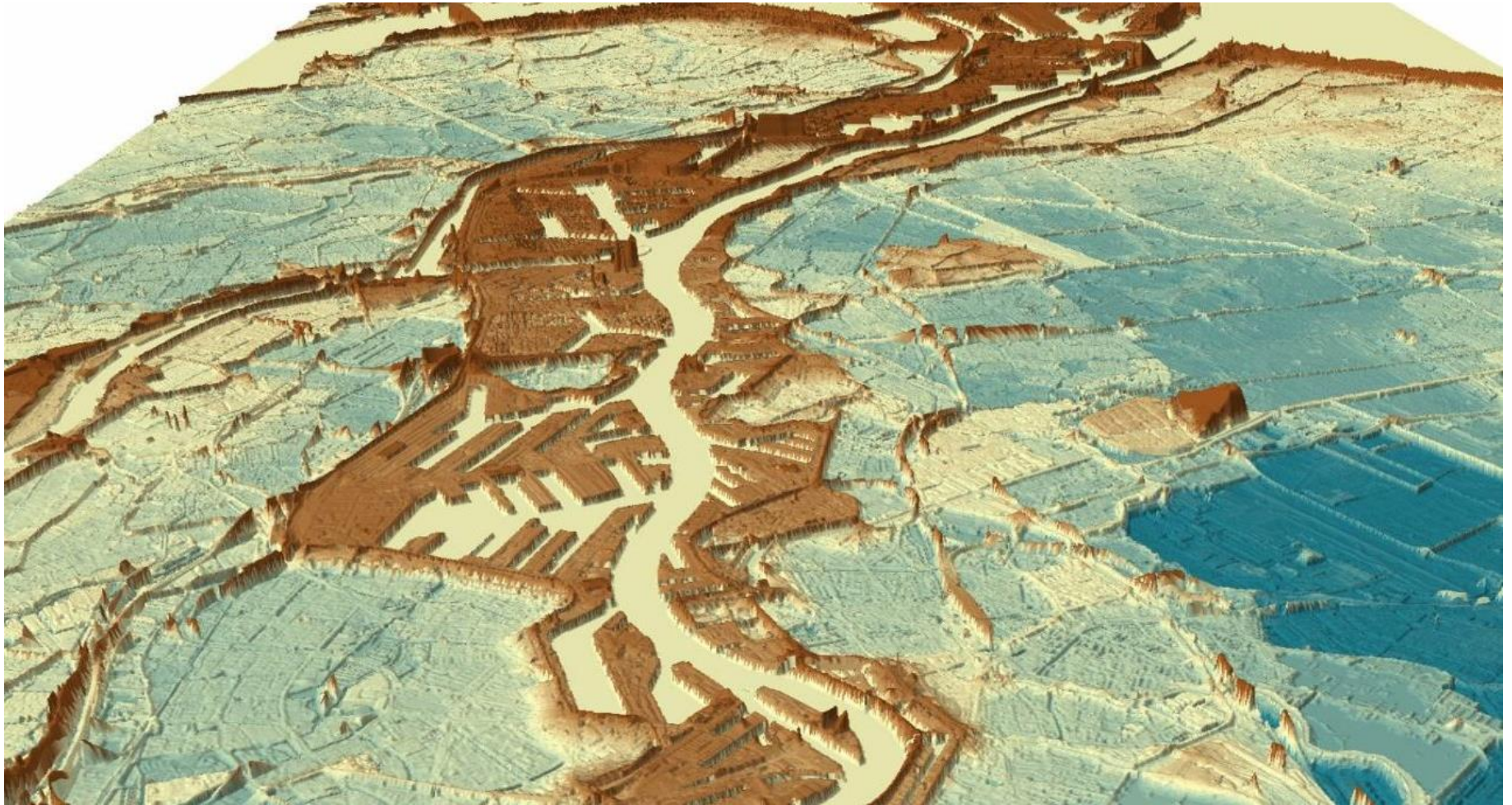
ROTTERDAM WEATHER WISE



[Introduction film RWW](#)

Emma Koenig
Advisor city management & maintenance
Project manager “Tile taxi”







“
Climate adaptation requires Rotterdam-style action. Rolling up our sleeves together with water boards, developers, social housing corporations, social initiators, the drinking water company and all Rotterdammers.

PROGRAM FRAMEWORK ROTTERDAM WEATHERWISE 2030

1 CLIMATE ADAPTATION CHALLENGES



Flooding



Rainfall



Heat



Groundwater



Land Subsidence



Drought



2 IMPLEMENTATION OPPORTUNITIES



New Developments



Existing built Environment



Energy- / Mobility- / biodiversity Transition



Public Space



The Rotterdamers

ASSESSMENT FRAMEWORK

4 WEATHERWISE PRIORITIES 2030



Implementation agenda 2022 - 2026

Implementation agenda 2026 - 2030



The Rotterdammer

Beeld-in-beeld

ROTTERDAM'S
TWEEN
WOORD

HYVA

TEGEL TAXI

WWW.TEGEL.TAXI

ook via www.tegel.taxi ze door ons laten ophalen.

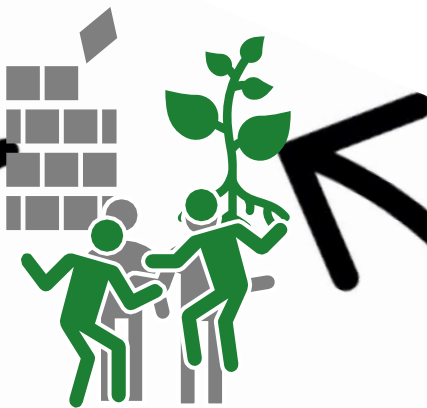
91-BHV-2

P VAN DER VELDEN lease

0:53 / 1:17

Goal: facilitation for residents to unseal private ground

- Heat stress
- Greening & biodiversity
- Rainfall & flooding



Communications channel

- Target audience: residents with (front)gardens
- Channels:
 - Website RWW
 - Website Tegeltaxi
 - Registration system
 - E-mail RWW
 - E-mail Tegeltaxi
- Contact & communication through neighbourhood initiatives

Promotion & marketing

- NK Tegelwippen
- Green caravan
- Kuip grass promotion



Realisation

- Realisation
 - Seasonal project
 - Area-specific orientation
 - Frequency 1x per week
- Conditions
- Contractor
- Processing concrete
- Budget ±€2.400 per week



City of
Rotterdam

Obstacles for implementation

- Sand
- Misuse of the tile service
- Lead in soil
- Contribution to the circular economy
 - Tiles of different sizes → difficult to reuse
 - No depot space
 - Transportation and logistics
- Implementing a pilot project into the organisation of the municipality

Tips and tricks

- Good contact and agreements with stakeholders are important
 - Land bank
 - Execution works department
- Start where there is energy
- Political backing
- Execution
 - Securing the process in the usual processes of execution of works
 - Combination of services:
 - Picking up tiles
 - Picking up sand
 - Delivering ground

Thank you!



Questions or remarks? E-mail:
et.koenig@rotterdam.nl
rotterdamsweerwoord@rotterdam.nl

#NKTEGELWIPPEN

